

## Visual Story for Visit to Father Christmas at the Vale & Downland Museum



Here is the ramp to the front door of the museum.

You will enter through the front door.



Here is our reception desk. You can tell the person here that you have come to see Father Christmas.

You will see the café.

On Dickensian Evening, there will be music playing and lots of people.



This is the entrance to the museum galleries, where you will find Father Christmas.

Our toilets are on the left, as you go past.



There are steps up to the galleries.  
If you need a route with no steps, there is one on the next page.

When you come up the steps, you will walk through here.





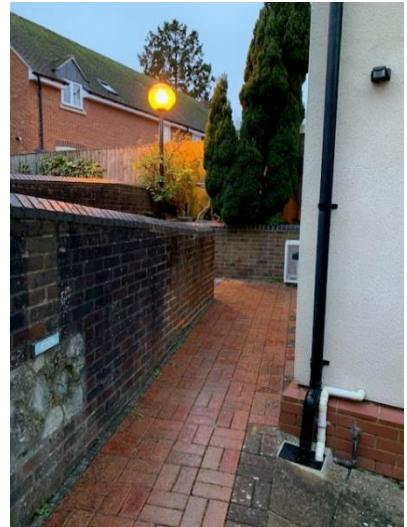
## Way to the galleries with no steps



Please ask the reception staff – they will show you the way and open the doors for you.

This door from the café will take you outside.

There is a ramp here that you can use.



You will enter the galleries through this door.

When you are inside, turn left and go past the model train.

You will see Mrs Claus waiting to greet you.



.....



Here is Mrs Claus. She will say hello and check your name on her list.

You can wait here until it is your turn to see Father Christmas.

Father Christmas will be sitting here in his chair.

Your family can come in with you to say hello.

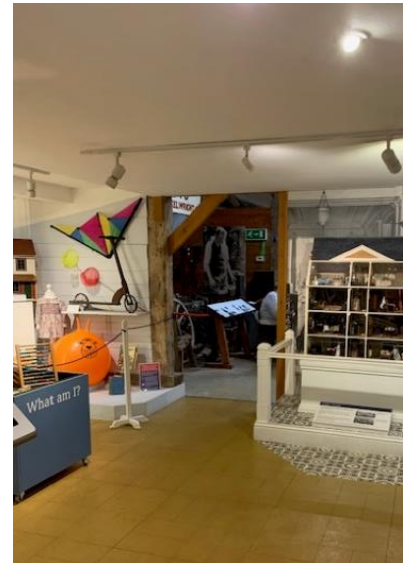


When you say goodbye to Father Christmas, you will all leave by this exit at the end of the room.



You will go through the galleries...

There are lots of objects in cases and on the walls.



If you are here on Dickensian Evening, there will be lots of stalls and people in our Barn gallery.

When you want to leave the Barn, go past the model train and turn left to go back the same way you came in

(or go out through the barn door if you need to use the ramp).

